

NEW JERSEY Countryside

Special
Interior
Design
Issue

Orchids

winter's glorious blooms

How-to
restore & renew
the inner you

Quiet season getaways
on the menu

Winter 2001

\$3.95



www.njcountryside.com

The challenge:

Create a luxurious feel incorporating new and existing antiques in this recently enlarged 315 square-foot master bedroom which would also provide a relaxing sitting/television viewing area.

Tere Bresin, Single Space, Silver Award



photos by Daniel Eiferr

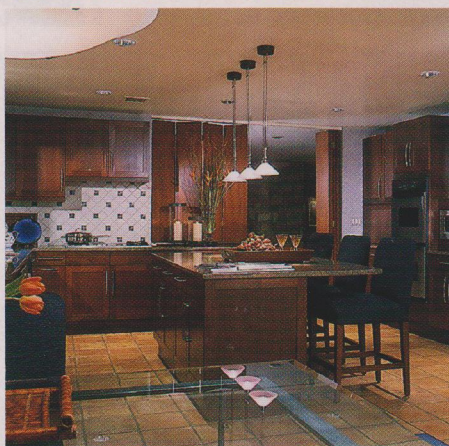
The solution:

The designer arranged the bedroom in two sections, with an elegant sleeping area and a sitting area that share a wonderful sense of spaciousness created by the tray ceiling. An existing marquetry chest of drawers and mirror were used, and cognac and wine colors were chosen to complement it. A damask patterned light stencil was applied over an umber glazed wall then overglazed to give a subtle elegant texture to the walls. A studded leather-upholstered French king size bed was mixed with richly patterned velvet on the pillows. An antique oil painting was placed over the bed to complement the rich textures. A bronze chenille was used on the love seat and a lady bug-embroidered coffee-colored silk for the window treatments. The solution for viewing television was to use a zero clearance fireplace with a television cabinet above it.

The challenge:

The objective for this 463 square-foot kitchen was to create a dramatic, inviting, yet flexible space – without changing the layout of the room.

Tere Bresin, Kitchen, Silver Award



The solution:

For the cabinets, Bresin chose the clean lines of Shaker style in mahogany with nine-inch slender European brushed nickel pulls. Stainless steel appliances were used.

Bresin created a dining area and seating area that took advantage of the view. A color scheme of pumpkin double-glazed walls with cobalt blue accents was used to complement the existing terra cotta floors. The multi-colored red granite counter tops were used with a backsplash that incorporates handmade white-glazed French tiles with cobalt and amber glass tile squares set in. Italian Deruta pottery is used as tableware and accessories.

The lighting solution for the room, in addition to strategically placed recessed fixtures, was to add the drama of a bronze globe fixture in addition to three pendants highlighting the island. The use of large scale upholstery balances the size of the space. The custom bar stools and dining chairs were used with rustic French dining table.